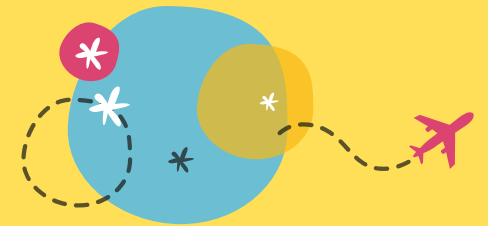


GUIDED AND MANAGED
BY LOCALS
TO MAKE YOUR VISIT
A WONDERFUL
EXPERIENCE

**YOUR
DESTINATION**



**OUR
EXPERTISE**

**MAURITIUS
UK
IRELAND
EUROPE
SEYCHELLES**

**TripEmbrk**

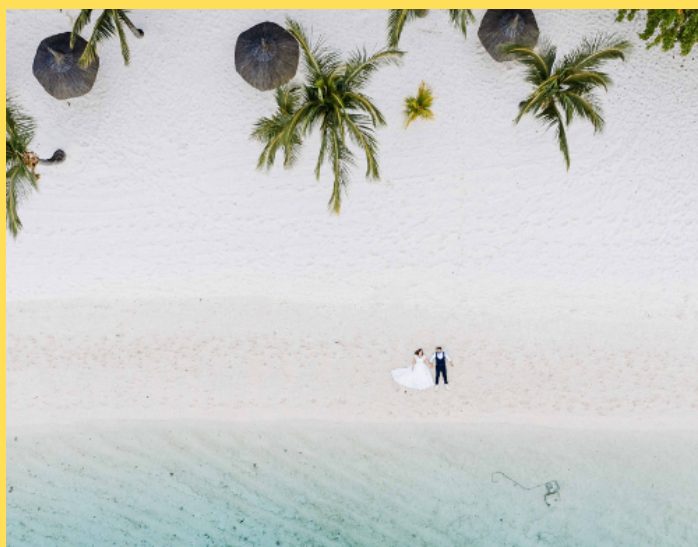
KNOWLEDGE | **INSIGHT** | TRAVEL

OUR PHILOSOPHY

TripEmbrk was founded to provide quality Destination Management Services to companies working in the educational & tourism sectors.

At the core is our belief of creating close ties with each partner in both B2B and B2A domains to best understand their needs and provide them with unparalleled products and services.

Whether you're getting ready to prepare quality educational, cultural, sporting or special interest programmes like music, performances or preparing a family tour or exotic honeymoon, planning such a program has never been easier.



OUR STRENGTH

With an experience across different verticals in the travel domain, TripEmbrk offers in-depth knowledge, market insight and comprehensive understanding of the Indian travel eco system.

Our strong pan-India partner network across tier one, two and beyond areas offers us a unique ability to promote products (and destinations) across both "the mature" and "the aspirational" markets.

Working with global partners who have the ability to offer unique and yet tailor-made products, allows us to create a strong recall value for our products & destinations.

The combined ability to launch strategic and tactical campaigns across different sales and marketing mediums helps in synchronising our efforts as well as short, medium and long-term goals of our partnership.

OUR PARTNERS

ATOM LEISURE - MAURITIUS

One of the biggest and most respected tourism organisations in Mauritius, with more than 60 years of domain experience.

The product range is a diverse mix of Leisure, MICE, Wedding, adventure and sporting programs. With their own fleet of cars, vans and catamaran's, they represent the best of what Mauritius tourism has to offer.

ECE TRAVEL - UK & EUROPE

Europe's leading operator and ground handler, focused on the inbound market, primarily involving schools, universities, colleges and special-interest groups.

ECE underpins these rich educational programmes with a robust health and safety policy, strict quality control, extensive auditing and by being a member of many leading travel organisations including ABTA, ETOA, SYTA, UKinbound and STF.



OUR CO-FOUNDERS

NITIN AIMA CO FOUNDER & CEO

You can call him "The Seeker". Nitin works on the long-term vision and goals for TripEmbrk. Nitin has been an active member of the travel industry for the past 25 years. In his previous roles, he led teams in nearly all travel domains including airlines, TMC's, cargo setup, travel consulting and has now Co-founded TripEmbrk, a travel sales aggregator.

Nitin believes that the sales ecosystem (B2A) for tourism products will from now on be split between large travel corporations & nano entrepreneurs/influencers and that we would primarily have to work with the latter.

SHVETA AIMA CO FOUNDER & COO

Shveta is "The Specialist" and comes with tons of experience, having worked in the Aviation and Development sectors for more than 20 years. She has managed teams in multiple geographies, working under tight deadlines, high expectations with strong donor oversight.

Shveta has multiple professional qualifications and focuses on creating newer products and their fulfilment methodologies.

**EDUCATIONAL
CULTURAL
SPORTS
MUSICAL
THEATRE
PERFORMANCE
LEARNING &
DEVELOPMENT**

**LEISURE
FAMILY
WEDDINGS
ADVENTURE
PATHFINDER
EXPERIENCES
HONEYMOON
M.I.C.E**



MORE INFO

Nitin Aima
Co-founder
+91 987 166 6099
nitin@TripEmbrk.com
www.TripEmbrk.com

Orchid Island, Sector 51,
Gurgaon, Haryana 122003
INDIA